

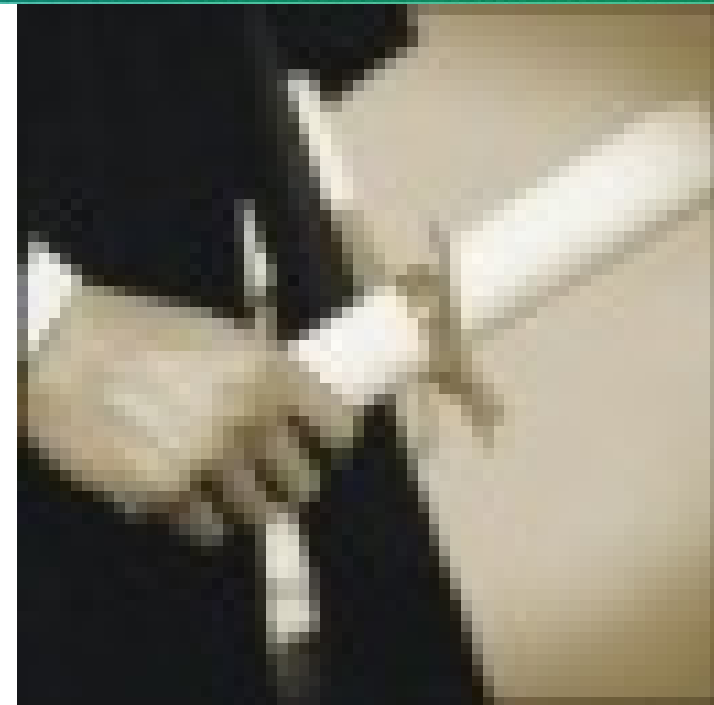
the
AMFEY
Project

youth development

- *seminars*
- *mentor training*
- *strategic planning*

SAT Preparation Workshop
College Tomorrow Series

2017 - 2018



Building Better Tomorrows ...

Agenda

- 1 • Workshop Guidelines
- 2 • College Preparatory Curriculum
- 3 • SAT Format – The Test
- 4 • Test Taking Methodology
- 5 • Test Section: Reading
- 6 • Test Section: Math



Workshop Guidelines

- Format
 - Sample test
 - Lecture: review of the sample test questions, material
- No cell phones/electronic communications at all
 - Collecting all electronic devices – please silence them first!
- No talking during the tests
- No movement during the tests
 - After you complete a section, you may take a break by leaving the room



College Preparation Curriculum

- 3 Years of Math (Algebra, Geometry, Trigonometry)
- 3 Years of English
 - Critical Thinking
 - Reading Comprehension
 - Effective Communication (Verbal and Written)
- 3 Years of Science (Biology, Chemistry, Physics)
 - Critical Thinking
 - Logic and Reasoning
 - Applied Math

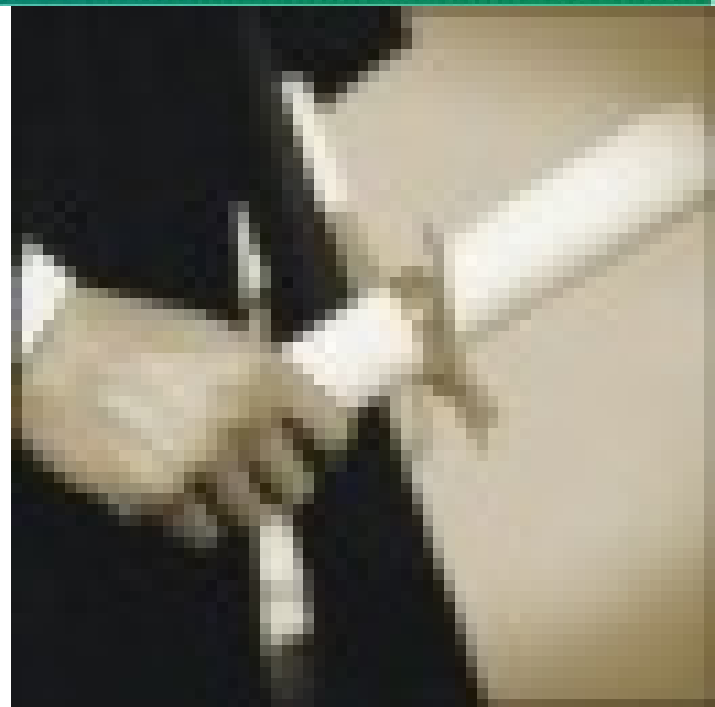


the
AMFEY
Project

youth development

- *seminars*
- *mentor training*
- *strategic planning*

SAT Test Basics



Building Better Tomorrows ...

SAT Dates and Fees (Fee waivers are available)

- Duration: 3 hours 45 minutes
- 9 sections (subject tests) toward SAT score
- Your score report
 - 4 colleges/universities and/or scholarship programs
- 2017 – 2018 Test Dates
 - October 7, 2017 (Late Deadline PASSED, Subject Tests)
 - November 4, 2017 (Deadline Oct 5th , Subject Tests)
 - December 2, 2017 (Deadline November 2nd , Subject Tests)
 - May 5, 2018 (Deadline April 6th , Subject tests)
 - June 2, 2018 (Deadline May 3rd , Subject tests)
- Cost: \$60.00 per test/\$29.00 for late registration
 - \$49.00 Waitlist fee – If admitted to the test center on test day
 - \$29.00 Change fee – test type, center or date change
 - Register by phone - \$15
 - Subject Tests
 - \$26.00 Basic fee – up to 3 tests
 - \$21 per additional test (Listening tests \$26.00)
 - SAT w/o Essay - \$46.00

Redesigned SAT: March 2016

- Optional Essay
- No penalty for guessing
- No vocabulary “you’ll never use again”



SAT – Test Day

- Bring
 - Your Admission Ticket
 - 2 - #2 pencils and a soft eraser
 - Photo ID
 - An acceptable calculator (graphing, scientific)
 - Can't make noise
 - Can't require electrical outlet
 - Can't have a paper tape
 - Can't be a pocket organizer
 - 4 function calculators not recommended
 - A watch (no audible alarm)
 - Snack
 - Your own beverage
 - Bag or backpack
- Do not Bring
 - Smart phone, laptop or tablet
 - Calculator that has a QWERTY keyboard
 - iPods or MP3 players
 - Texting devices
 - Cameras or recording equipment

<http://sat.collegeboard.org/register/sat-test-day-checklist>



SAT Components

Section	Content	Type
1. Reading	Sentence Completion and Reading Comprehension	Multiple-choice questions
2. Writing and Language	Sentence Completion and Reading Comprehension	Multiple-choice questions
3. Math w/o calculator	HS geometry and algebra, numbers and operations, statistics, probability and data analysis	Multiple-choice questions and student produced responses
4. Math w/ calculator	HS geometry and algebra, numbers and operations, statistics, probability and data analysis	Multiple-choice questions and student produced responses
5. Essay	Analyzing a Source	Multiple-choice questions and student produced responses

To what purpose?

- Words in Context
- Command of Evidence
- Math that Matters Most
- Essay Analyzing a Source
- Problems Grounded in Real-World Contexts
- Analysis in Science and in History/Social Studies
- US Founding Documents and the Great Global Conversation



SAT Dos and Don'ts

- You are NOT allowed to
 - Jump back and forth between sections
 - Return to earlier sections to change answers
 - Spend more than the allotted time on any section
- You CAN
 - Move around within a section
 - Flip through your section at the beginning to see what types of questions are coming up



SAT College and Career Readiness Benchmarks

Students who take the PSAT/NMSQT, PSAT 10, and PSAT 8/9 see grade-level benchmarks on their score reports. Grade-level benchmarks indicate whether students are on track for college and career readiness. They are based on expected student growth toward SAT benchmarks at each grade. Preliminary benchmarks were used for the 2015 PSAT/NMSQT and fall PSAT 8/9 scores.

Grade	Evidence Based Reading & Writing	Math
SAT College & Career	480	530
11 th Grade	460	510
10 th Grade	430	480
9 th Grade	410	450
8 th Grade	390	430

Section 1: Essay

- 25 minutes
- Read the essay question
- Think of two to three points on the topic that you want to make
 - No more than 2-3 points
- Create your opening statement
 - Your summary is the same as your opening statement, rewritten!
- Write your introduction (opening statement with sentences)
- Write a paragraph on each of your points
 - No more than 3-4 sentences
- Write your closing statement (your opening statement, restated!)



SAT Essay Scoring Guide

SCORE OF 6

An essay in this category demonstrates *clear and consistent mastery*, although it may have a few minor errors. A typical essay

- effectively and insightfully develops a point of view on the issue and demonstrates outstanding critical thinking, using clearly appropriate examples, reasons, and other evidence to support its position
- is well organized and clearly focused, demonstrating clear coherence and smooth progression of ideas
- exhibits skillful use of language, using a varied, accurate, and apt vocabulary
- demonstrates meaningful variety in sentence structure
- is free of most errors in grammar, usage, and mechanics

SCORE OF 5

An essay in this category demonstrates *reasonably consistent mastery*, although it will have occasional errors or lapses in quality. A typical essay

- effectively develops a point of view on the issue and demonstrates strong critical thinking, generally using appropriate examples, reasons, and other evidence to support its position
- is well organized and focused, demonstrating coherence and progression of ideas
- exhibits facility in the use of language, using appropriate vocabulary
- demonstrates variety in sentence structure
- is generally free of most errors in grammar, usage, and mechanics

SCORE OF 4

An essay in this category demonstrates *adequate mastery*, although it will have lapses in quality. A typical essay

- develops a point of view on the issue and demonstrates competent critical thinking, using adequate examples, reasons, and other evidence to support its position
- is generally organized and focused, demonstrating some coherence and progression of ideas
- exhibits adequate but inconsistent facility in the use of language, using generally appropriate vocabulary
- demonstrates some variety in sentence structure
- has some errors in grammar, usage, and mechanics

SAT Essay Scoring Guide

SCORE OF 3

An essay in this category demonstrates *developing mastery*, and is marked by ONE OR MORE of the following weaknesses:

- develops a point of view on the issue, demonstrating some critical thinking, but may do so inconsistently or use inadequate examples, reasons, or other evidence to support its position
- is limited in its organization or focus, or may demonstrate some lapses in coherence or progression of ideas
- displays developing facility in the use of language, but sometimes uses weak vocabulary or inappropriate word choice
- lacks variety or demonstrates problems in sentence structure
- contains an accumulation of errors in grammar, usage, and mechanics

SCORE OF 2

An essay in this category demonstrates *little mastery*, and is flawed by ONE OR MORE of the following weaknesses:

- develops a point of view on the issue that is vague or seriously limited, and demonstrates weak critical thinking, providing inappropriate or insufficient examples, reasons, or other evidence to support its position
- is poorly organized and/or focused, or demonstrates serious problems with coherence or progression of ideas
- displays very little facility in the use of language, using very limited vocabulary or incorrect word choice
- demonstrates frequent problems in sentence structure
- contains errors in grammar, usage, and mechanics so serious that meaning is somewhat obscured

SCORE OF 1

An essay in this category demonstrates *very little or no mastery*, and is severely flawed by ONE OR MORE of the following weaknesses:

- develops no viable point of view on the issue, or provides little or no evidence to support its position
- is disorganized or unfocused, resulting in a disjointed or incoherent essay
- displays fundamental errors in vocabulary
- demonstrates severe flaws in sentence structure
- contains pervasive errors in grammar, usage, or mechanics that persistently interfere with meaning

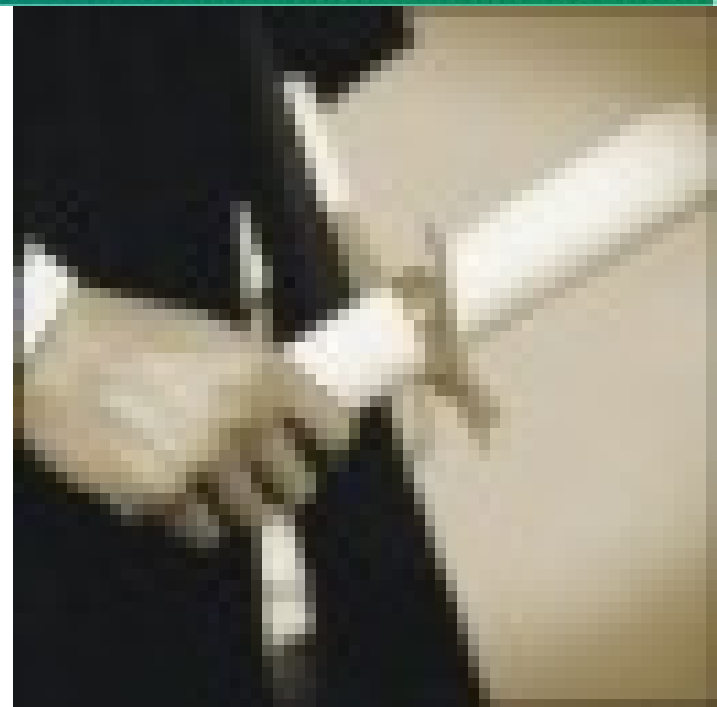
Essays not written on the essay assignment will receive a score of zero.

the
AMFEY
Project

youth development

- *seminars*
- *mentor training*
- *strategic planning*

Test Taking Methodology



Building Better Tomorrows ...

Test methodology: Breathe first!

BREATHE!

Your Goal: Maximize your scores!

First, answer all questions you **KNOW** the answer to

- Math, Sentence completion: arranged easiest to hardest
- Write a "2" or "3" next to every question you don't answer

Second, answer all questions you **CAN DETERMINE** the answer to

- Answer all the "2" questions

Third, answer questions, as time allows, that are left

- Answer all the "3" questions
- Don't guess!: Blank answers – no point deduction



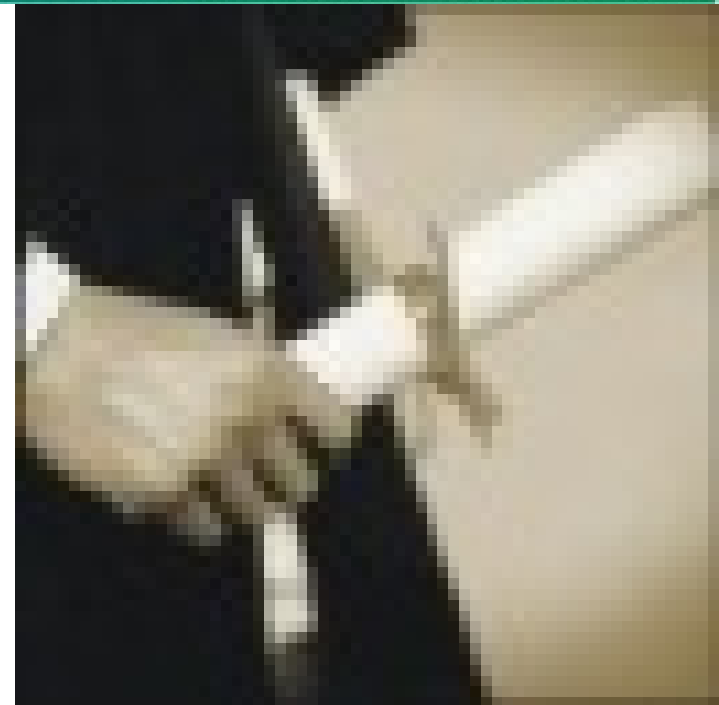
the
AMFEY
Project

youth development

- seminars
- mentor training
- strategic planning

SAT Reasoning Test: Section 1 – 28 minutes
Reading

Questions: **1 – 5**
 11-15
 21 – 27
 32 - 38
 43 - 51



Building Better Tomorrows ...

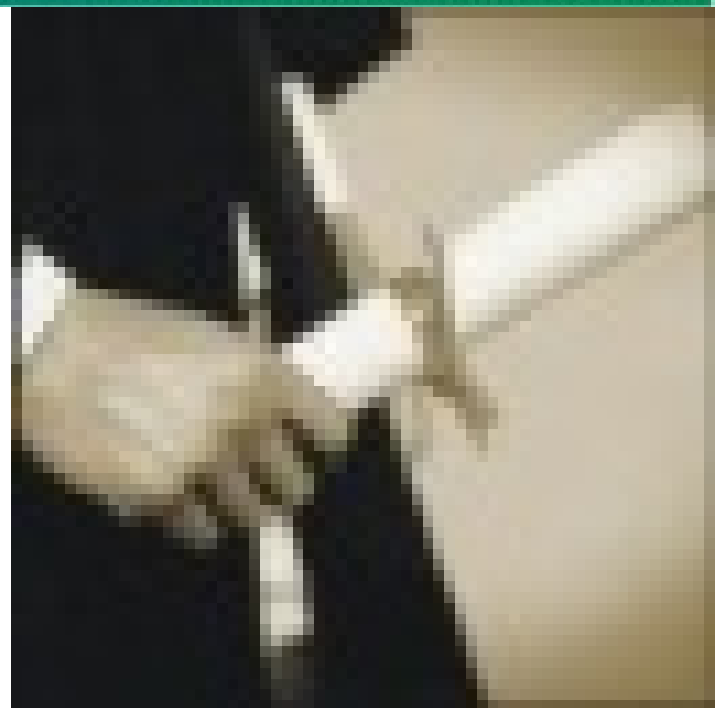
the
AMFEY
Project

youth development

- *seminars*
- *mentor training*
- *strategic planning*

SAT Reasoning Test: Section 2: Math – No
Calculator – 25 minutes

Questions: **All**



Building Better Tomorrows ...

It's time.....for better results!



College Admissions Package

- College/University
 - Cover letter
 - Basic application information (one sample application)
 - Career essay
 - References (personal, job and educational)
- Scholarships
 - Scholarship cover letter
 - Basic application information (one sample application)
 - College major essay
 - References (personal, job and educational)
 - Scholarship eligibility list
- Activities Calendar
 - Submission deadlines
 - Test dates



Web Resources

- Website: <http://www.finiscook.com>
 - Youth Development section
 - Links to useful, informative web sites
- Website: <http://www.collegeboard.org>
- Website: <http://www.studentaid.ed.gov/pubs>
- Website: <http://www.scholarships.com>

